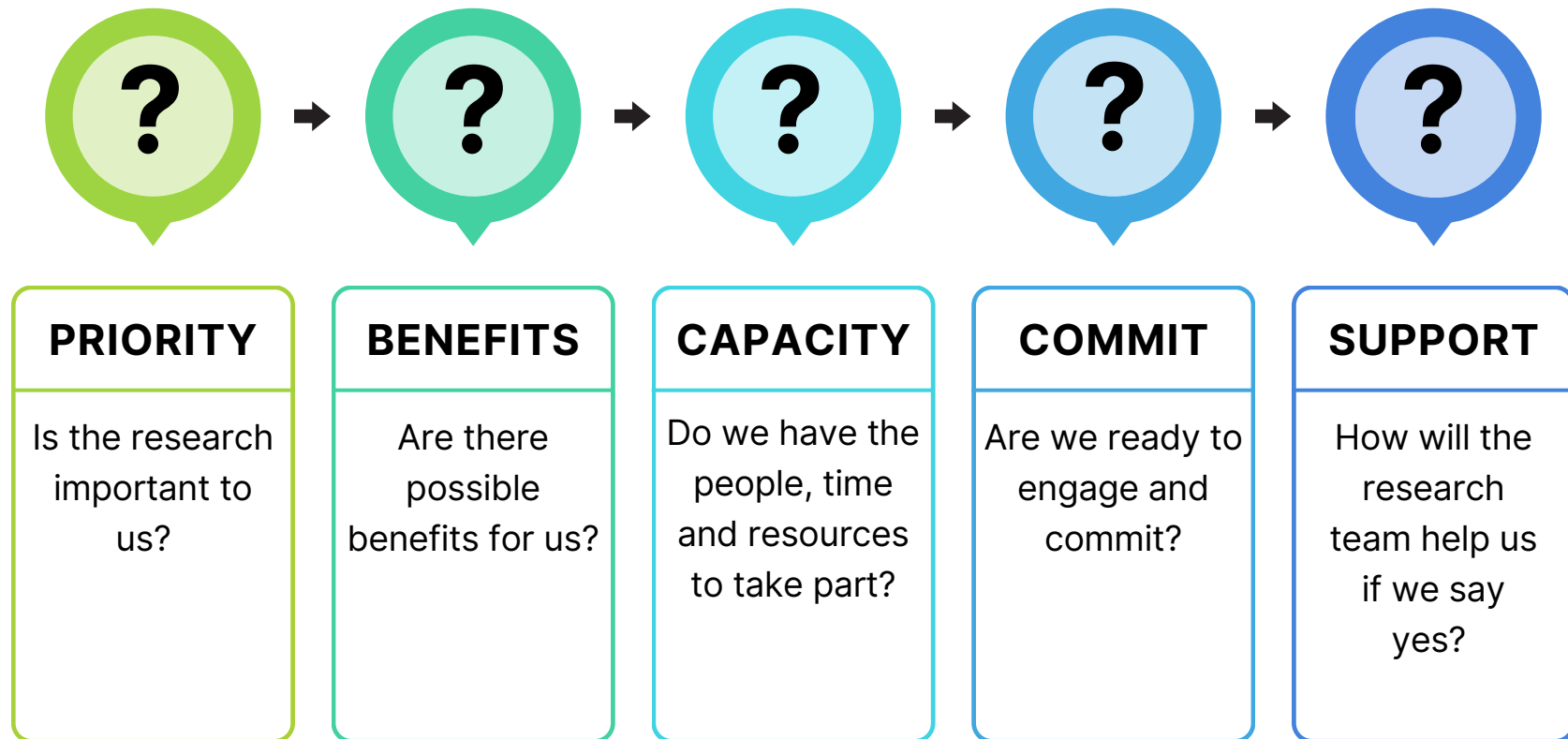



Are you ready to be involved in a research study?

Guidance for care homes*



*based on Spilsbury K, Peryer G, Devi R, Haunch K, Jordao M, Thompson C, Goodman C. *On your marks, get set, pause: what care home teams should consider before partnering with a trial research group*. Nursing and Residential Care. 2023.

 **PRIORITY**
The study question matters for our care home

 **BENEFITS**
The study may benefit our residents and/or staff



CAPACITY

- We can commit the people, time and resources needed throughout the study
- A named staff member will coordinate research activities
- We can do study activities without compromising quality
- Our indemnity arrangements cover us



COMMIT

- We will engage because we understand *how* the study might benefit us
- We have a plan for any training
- We can discuss the study regularly in home meetings
- We will make sure new and temporary staff are aware of study responsibilities



SUPPORT

- We know how we will work, communicate with, and ask questions of the research team
- We know how any payments for taking part will happen
- We know how plans for knowledge sharing with staff, residents, families and friends will happen
- We have a plan for collaborating with residents, families and friends



READY

